

STANDARD

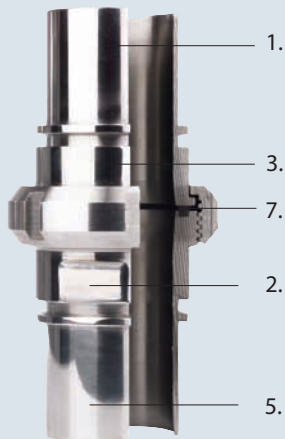
SMS 1145 (Swedish Manufacturing Standard) food couplings are used in the food, chemical and pharmaceutical industries.

OPERATION

SMS 1145 food couplings are connected in the same way as DIN 11851-compliant food couplings. The nut is slid across the head of the female coupling and onto the male coupling. The flat face of the female coupling is brought into contact with the turned-up seal of the male coupling. The nut is then tightened by hand or using a wrench.

LMC-Couplings offer male and female SMS 1145 food couplings with smooth or serrated hose shank. The smooth hose shank with collar is designed in accordance with EN 14420-2 / DIN2817 for assembly using RK and RKP safety clamps or FLEXOLINE® safety clamps. Where a serrated hose shank assembly is required, HRRK swage ferrules are recommended.

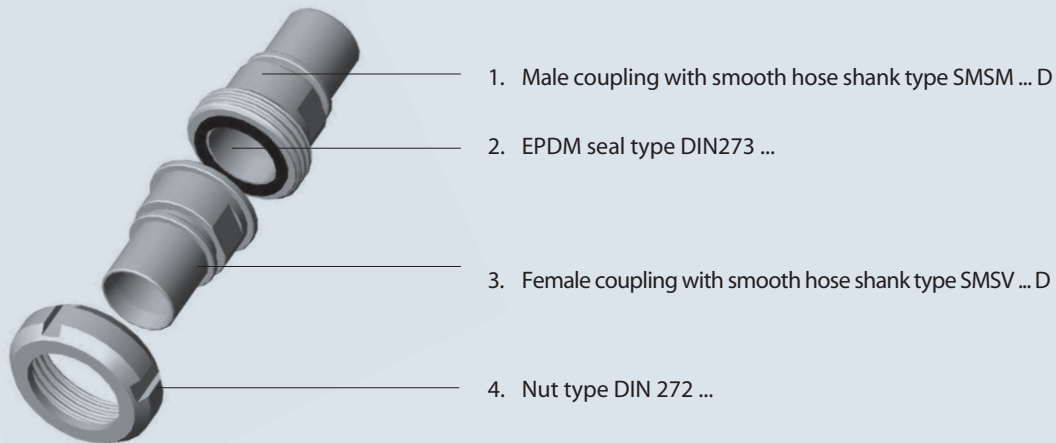
FEATURES



1. Electro-polished external surface for improved hygiene
2. Additional wrench surface to prevent twisting of the hose when fitting one half of the coupling to the other half
3. Extra-long head for easy assembly and disassembly
4. Low Ra-value of inner surface up to $\leq 1.6 \mu\text{m}$
5. Hose shank for assembly with RK and RKP safety clamps, FLEXOLINE® safety clamps or HRRK or HRP swage ferrules
6. Easy assembly of a rubber protection ring
7. Standard EPDM seal, conforming FDA directive



CONNECTION



Food couplings SMS 1145 vs DIN 11851

	SMS 1145	DIN 11851
Female coupling	Flat face	Conical face
Male coupling	Turned-up seal	Deep seal
Seal	Square seal	U-shape seal
Male and female thread	Rounded thread complying with DIN 405/1	Rounded thread complying with DIN 405/1
Max. working pressure	6 bar / 87 psi	40 bar / 580 psi

SMS 1145



DIN 11851



APPLICATION

For the food (beverage, pharmaceutical and chemical) industrie(s).

WORKING PRESSURE

6 bar / 87 psi

TEMPERATURE

-40°C / -40°F up to 145°C / 293°F

Hose, coupling, assembly method and seal must be chosen in relation with the disired temperature and working pressure.

MATERIAL

- Coupling
 - Stainless steel AISI 316 - 1.4401 = hose shank coupling (standard)
 - Stainless steel AISI 304 - 1.4301 = nut and cap (standard)
- Seal
 - EPDM
 - NBR, FPM on request available

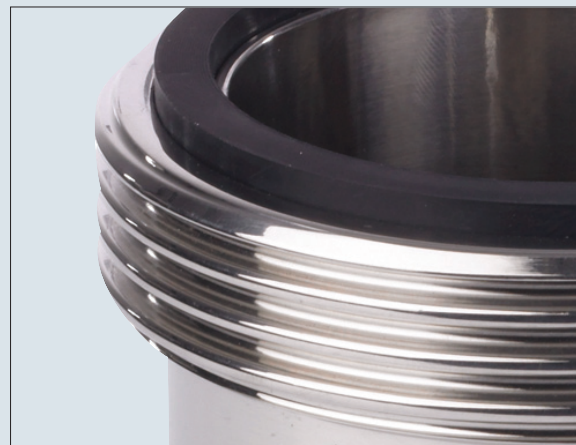
ASSEMBLY

1. RK and RKP safety clamps complying with EN 14420-3 / DIN 2817
2. FLEXOLINE® safety clamps
3. HRRK or HRP swage ferrules
4. Welding

THREADS

Food couplings complying with SMS 1145 are not interchangeable with DIN 11851 couplings. Although the threads of both couplings comply with DIN 405/1, precise dimensions vary, making them non-interchangeable.

ND	THREAD COMPLYING WITH DIN 405/1
25	RD 40 x 1/6"
32	RD 48 x 1/6"
38	RD 60 x 1/6"
51	RD 70 x 1/6"
63.5	RD 85 x 1/6"
76	RD 98 x 1/6"
101.6	RD 132 x 1/6"



RA-VALUE

Roughness average value (Ra-value) SMS 1145 couplings

1. Ra-value inner side $\leq 1.6 \mu\text{m}$
2. Ra-value outer side $\leq 3.2 \mu\text{m}$

Other Ra-values and Ra-report available on request.

FOOD COUPLINGS SMS 1145



FEMALE COUPLING WITH SMOOTH HOSE SHANK AND NUT

ND	Inch	For hose mm	Thread DIN 405/1	Weight/pc Kg	Reference
25	1"	25	RD 40 x 1/6"	0.23	SMSV025D
32	1.1/4"	32	RD 48 x 1/6"	0.32	SMSV032D
38	1.1/2"	38	RD 60 x 1/6"	0.51	SMSV038D
51	2"	50	RD 70 x 1/6"	0.70	SMSV050D
63.5	2.1/2"	63	RD 85 x 1/6"	1.04	SMSV063D
76	3"	75	RD 98 x 1/6"	1.61	SMSV075D
101.6	4"	100	RD 132 x 1/6"	3.32	SMSV100D



Hose shank standard: EN 14420-2 / DIN 2817

Coupling material: stainless steel AISI 316 - 1.4401

Nut material: stainless steel AISI 304 - 1.4301

Assembly: RK and RKP safety clamps EN 14420-3 / DIN 2817 or FLEXOLINE® safety clamps

FEMALE COUPLING WITH SERRATED HOSE SHANK AND NUT

ND	Inch	For hose mm	Thread DIN 405/1	Weight/pc Kg	Reference
25	1"	25	RD 40 x 1/6"	0.24	SMSV025
32	1.1/4"	32	RD 48 x 1/6"	0.33	SMSV032
38	1.1/2"	38	RD 60 x 1/6"	0.53	SMSV038
51	2"	50	RD 70 x 1/6"	0.74	SMSV050
63.5	2.1/2"	63	RD 85 x 1/6"	1.14	SMSV063
76	3"	75	RD 98 x 1/6"	1.52	SMSV075
101.6	4"	100	RD 132 x 1/6"	3.02	SMSV100



Coupling material: stainless steel AISI 316 - 1.4401

Nut material: stainless steel AISI 304 - 1.4301

Assembly: HRRK swage ferrules

FEMALE COUPLING WITH SMOOTH HOSE SHANK - WITHOUT NUT

ND	Inch	For hose mm	Weight/pc Kg	Reference
25	1"	25	0.12	SMSV025DZM
32	1.1/4"	32	0.16	SMSV032DZM
38	1.1/2"	38	0.26	SMSV038DZM
51	2"	50	0.42	SMSV050DZM
63.5	2.1/2"	63	0.64	SMSV063DZM
76	3"	75	0.80	SMSV075DZM
101.6	4"	100	1.70	SMSV100DZM



Hose shank standard: EN 14420-2 / DIN 2817

Coupling material: stainless steel AISI 316 - 1.4401

Assembly: RK and RKP safety clamps EN 14420-3 / DIN 2817 or FLEXOLINE® safety clamps

FOOD COUPLINGS SMS 1145



FEMALE COUPLING WITH SERRATED HOSE SHANK - WITHOUT NUT

ND	Inch	For hose mm	Weight/pc Kg	Reference
25	1"	25	0.13	SMSV025ZM
32	1.1/4"	32	0.17	SMSV032ZM
38	1.1/2"	38	0.28	SMSV038ZM
51	2"	50	0.42	SMSV050ZM
63.5	2.1/2"	63	0.65	SMSV063ZM
76	3"	75	0.87	SMSV075ZM
101.6	4"	100	1.38	SMSV100ZM



Coupling material: stainless steel AISI 316 - 1.4401
 Assembly: HRRK swage ferrules

MALE COUPLING WITH SMOOTH HOSE SHANK

ND	Inch	For hose mm	Thread DIN 405/1	Weight/pc Kg	Reference
25	1"	25	RD 40 x 1/6"	0.18	SMSM025D
32	1.1/4"	32	RD 48 x 1/6"	0.25	SMSM032D
38	1.1/2"	38	RD 60 x 1/6"	0.44	SMSM038D
51	2"	50	RD 70 x 1/6"	0.54	SMSM050D
63.5	2.1/2"	63	RD 85 x 1/6"	0.96	SMSM063D
76	3"	75	RD 98 x 1/6"	1.25	SMSM075D
101.6	4"	100	RD 132 x 1/6"	1.60	SMSM100D



Hose shank standard: EN 14420-2 / DIN 2817
 Coupling material: stainless steel AISI 316 - 1.4401
 Assembly: RK and RKP safety clamps EN 14420-3 / DIN 2817 or FLEXOLINE® safety clamps
 Seal: EPDM black included

MALE COUPLING WITH SERRATED HOSE SHANK

ND	Inch	For hose mm	Thread DIN 405/1	Weight/pc Kg	Reference
25	1"	25	RD 40 x 1/6"	0.18	SMSM025
32	1.1/4"	32	RD 48 x 1/6"	0.25	SMSM032
38	1.1/2"	38	RD 60 x 1/6"	0.44	SMSM038
51	2"	50	RD 70 x 1/6"	0.60	SMSM050
63.5	2.1/2"	63	RD 85 x 1/6"	0.86	SMSM063
76	3"	75	RD 98 x 1/6"	1.18	SMSM075
101.6	4"	100	RD 132 x 1/6"	1.60	SMSM100



Coupling material: stainless steel AISI 316 - 1.4401
 Assembly: HRRK swage ferrules
 Seal: EPDM black included

FOOD COUPLINGS SMS 1145



NUT

ND	Inch	Thread DIN 405/1	OD Ø mm	ID Ø nut mm	Height mm	Weight/pc kg	Reference
25	1"	RD 40x1/6"	51.0	32.0	20.0	0.11	DIN272025
32	1.1/4"	RD 48x1/6"	60.0	40.0	22.0	0.16	DIN272032
38	1.1/2"	RD 60x1/6"	74.0	48.0	25.0	0.25	DIN272040
51	2"	RD 70x1/6"	84.0	60.50	26.0	0.32	DIN272050
63.5	2.1/2"	RD 85x1/6"	100.0	74.0	30.0	0.49	DIN272065
76	3"	RD 98x1/6"	114.0	87.0	32.0	0.65	DIN272080
101.6	4"	RD 132x1/6"	160.0	112.0	45.0	1.64	DIN272100



Nut material: AISI 304 - 1.4301
Other materials available on request

SQUARE SEAL - EPDM

ND	Inch	OD Ø mm	ID Ø mm	Height mm	Weight/pc kg	Reference
25	1"	32.0	25.0	5.50	0.002	DIN273025
32	1.1/4"	40.0	32.0	5.50	0.003	DIN273032
38	1.1/2"	48.0	38.0	5.50	0.004	DIN273040
51	2"	61.0	51.0	5.50	0.005	DIN273050
63.5	2.1/2"	73.5	63.5	5.50	0.007	DIN273065
76	3"	86.0	76.0	5.50	0.009	DIN273076
101.6	4"	113.5	101.6	5.50	0.011	DIN273100



Material: EPDM, black
NBR, FPM on request available

